



Painted Pony 'n Quilts

Somerfield - Month 5

PROJECT:

Butterfly #5

page \_\_\_ of \_\_\_

1



patt. piece  
Background

size: 11 x 10 1/2

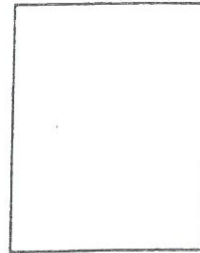
6



patt. piece  
Berries  
Pinwheel (1)

size: 3 x 11

11



patt. piece

size: \_\_\_\_\_

2



patt. piece  
Outer Wings  
Pinwheel (1)

size: 4 x 16

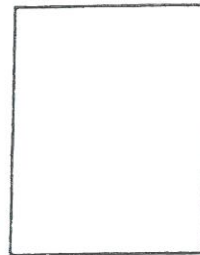
7



patt. piece  
Berries  
Pinwheel (1)

size: 3 x 11

12



patt. piece

size: \_\_\_\_\_

3



patt. piece  
Inner Wing

size: 2 1/2 x 11

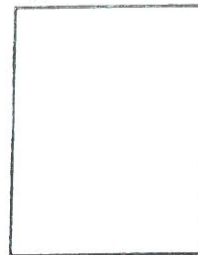
8



patt. piece  
Berries  
Pinwheel (1)

size: 3 x 11

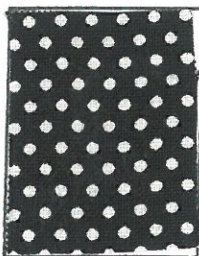
13



patt. piece

size: \_\_\_\_\_

4



patt. piece  
Body

size: 2 x 4

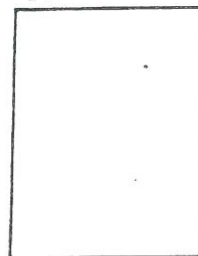
9



patt. piece

size: \_\_\_\_\_

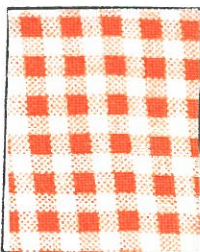
14



patt. piece

size: \_\_\_\_\_

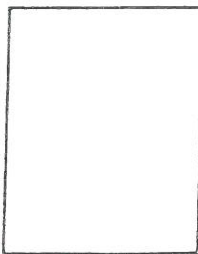
5



patt. piece  
Berries  
Pinwheel (1)

size: 3 x 11

10



patt. piece

size: \_\_\_\_\_

15



patt. piece

size: \_\_\_\_\_