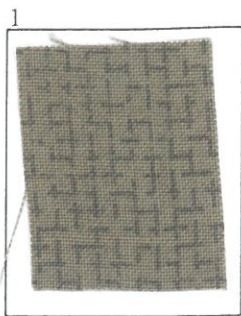


PROJECT: A Dog's Life - Month 4 2019 page 1 of 2  
Park Meeting



1  
 patt. piece Background  
 fabric info And 99193CN  
 \$/yd 12. - \$/piece 3.56  
 size to cut 14 x 32  
 method of cutting 32" strip ÷



6  
 Hugo's collar, Heart,  
 Poodle Ear, tulip  
 patt. piece \_\_\_\_\_  
 fabric info \_\_\_\_\_  
 \$/yd \_\_\_\_\_ \$/piece .42  
 size to cut 2 x 3 1/2  
 method of cutting \_\_\_\_\_



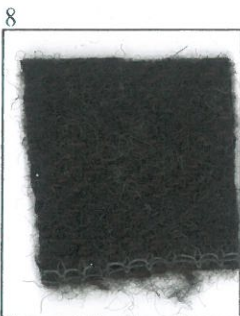
2  
 patt. piece Hill & Border Sps.  
 fabric info Marcus R17-4067-0188  
 \$/yd 12. - \$/piece 1.50  
 size to cut 4 1/2 x wof  
 method of cutting \_\_\_\_\_



7  
 patt. piece Daisy  
 fabric info \_\_\_\_\_  
 \$/yd \_\_\_\_\_ \$/piece 1.08  
 size to cut 3 1/2 x 5  
 method of cutting \_\_\_\_\_



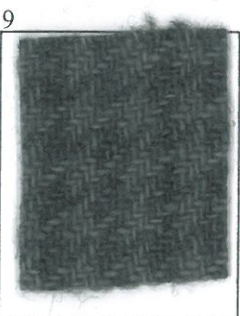
3  
 patt. piece Hugo (Brown Dog)  
 fabric info \_\_\_\_\_  
 \$/yd \_\_\_\_\_ \$/piece 3.42  
 size to cut 6 x 9 1/2  
 method of cutting \_\_\_\_\_



8  
 patt. piece Daisy Centers  
 fabric info \_\_\_\_\_  
 \$/yd \_\_\_\_\_ \$/piece .23  
 size to cut 1 1/2 x 2 1/2  
 method of cutting \_\_\_\_\_



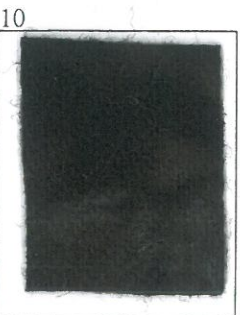
4  
 Jet (Black Dog)  
 Butterfly Body  
 patt. piece \_\_\_\_\_  
 fabric info \_\_\_\_\_  
 70r  
 \$/yd \_\_\_\_\_ \$/piece 1.89  
 size to cut 4 1/2 x 7  
 method of cutting \_\_\_\_\_



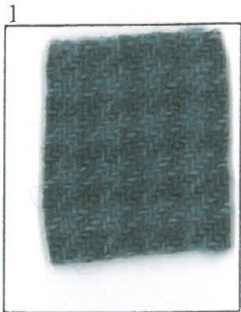
9  
 patt. piece Round Flower  
 fabric info \_\_\_\_\_  
 \$/yd \_\_\_\_\_ \$/piece .24  
 size to cut 2 x 2  
 method of cutting \_\_\_\_\_



5  
 Rosie (Red Poodle)  
 patt. piece \_\_\_\_\_  
 fabric info \_\_\_\_\_  
 \$/yd \_\_\_\_\_ \$/piece 1.65  
 size to cut 5 x 5 1/2  
 method of cutting \_\_\_\_\_

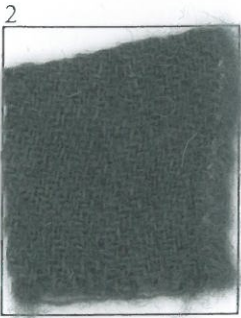


10  
 Hugo's Ears (Brown Dog)  
 patt. piece \_\_\_\_\_  
 fabric info \_\_\_\_\_  
 \$/yd \_\_\_\_\_ \$/piece .14  
 size to cut 1 1/2 x 1 1/2  
 method of cutting \_\_\_\_\_  
 (14.83)



patt. piece Upper Butterfly  
fabric info \_\_\_\_\_

S/yd \_\_\_\_\_ S/piece .23  
size to cut 1 1/2 x 2 1/2  
method of cutting \_\_\_\_\_



patt. piece Lower Butterfly  
fabric info \_\_\_\_\_

S/yd \_\_\_\_\_ S/piece .33  
size to cut 1 1/2 x 2 1/2  
method of cutting \_\_\_\_\_



Rosie deJets  
patt. piece Collars  
fabric info \_\_\_\_\_

S/yd \_\_\_\_\_ S/piece .14  
size to cut 1 1/2 x 1 1/2  
method of cutting \_\_\_\_\_